



1 Ashley Road, London, N17 9NL

£2,400 Per Month



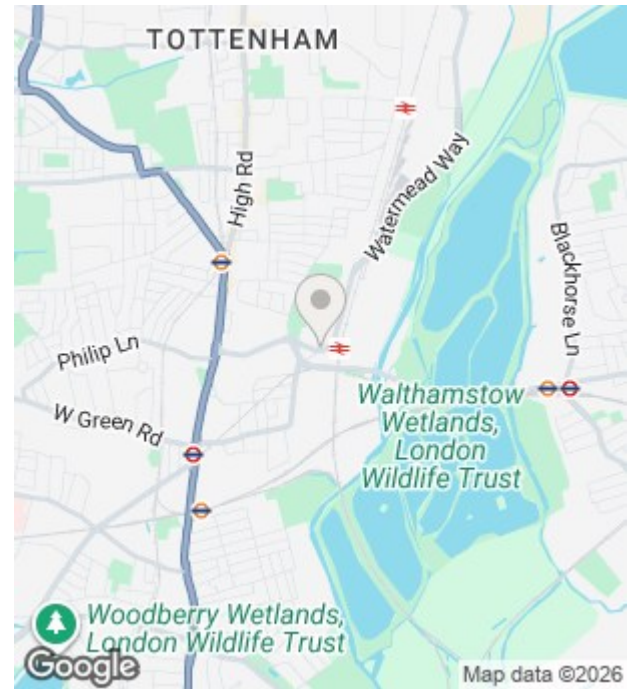
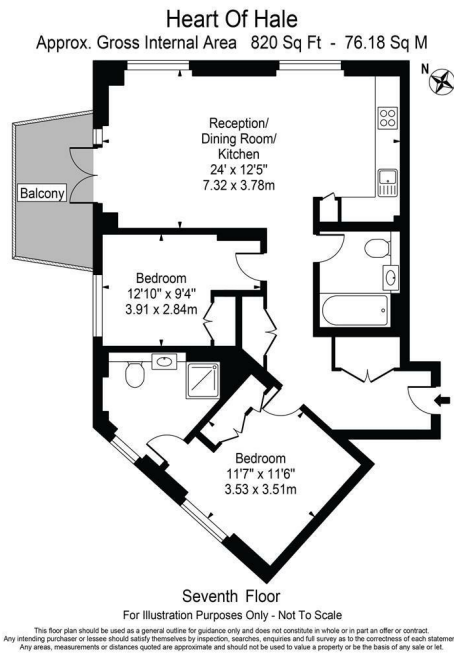
Luxury 7th floor two bedroom, two bathroom apartment measures approximately 820 Sq ft - is thoughtfully designed, beautifully finished and located in Tottenham Hale's most prestigious development. Interiors are by Conran and amenities include 24 hour concierge, residents lounge and landscaped communal gardens.

Located less than a minutes walk from Tottenham Hale Station offering links via Victoria Line (4 stops to Kings Cross and 6 stops to Oxford Street) and National Rail with a direct link to Stansted Airport in 40 minutes.

Council Tax Band D

- 24 Hour Concierge
- Resident Lounge
- Close to Tottenham Hale Station
- Luxury Finish
- Resident Terraces
- Underfloor Heating
- Moments from Retail Park





Energy Efficiency Rating		Current	Potential
<i>Very energy efficient - lower running costs</i>			
(92 plus) A			
(81-91) B			
(69-80) C			
(55-68) D			
(39-54) E			
(21-38) F			
(1-20) G			
<i>Not energy efficient - higher running costs</i>			
England & Wales		EU Directive 2002/91/EC	

Environmental Impact (CO ₂) Rating		Current	Potential
<i>Very environmentally friendly - lower CO2 emissions</i>			
(92 plus) A			
(81-91) B			
(69-80) C			
(55-68) D			
(39-54) E			
(21-38) F			
(1-20) G			
<i>Not environmentally friendly - higher CO2 emissions</i>			
England & Wales		EU Directive 2002/91/EC	

Unit 10 Paddington Works 8 Hermitage Street, London, W2 1BE
Tel: +44(O)20 3019 6151 Email: lettings@grange.london